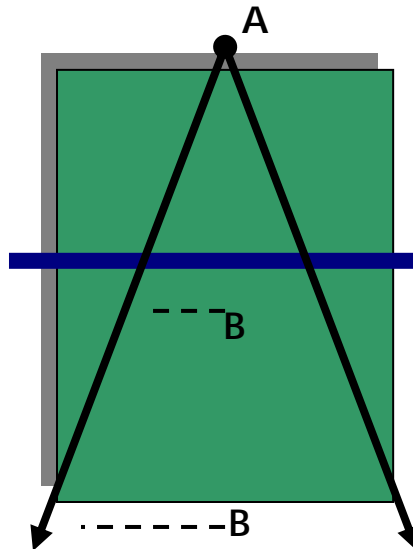


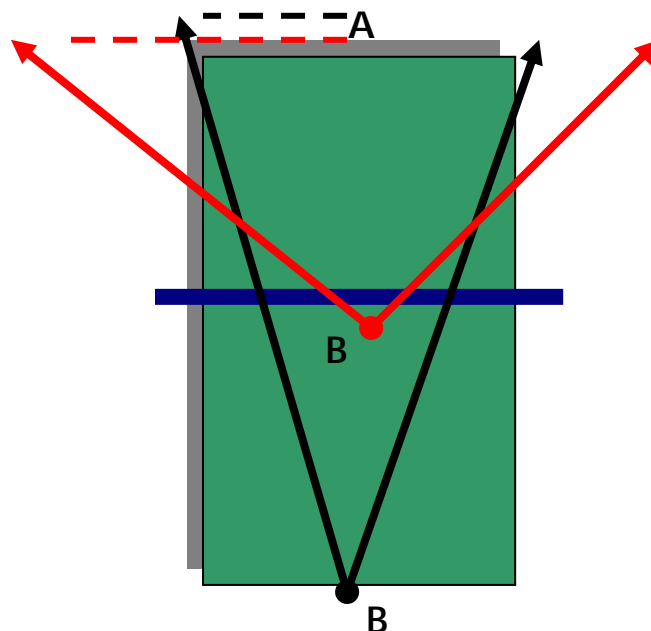
GET TO THE NET.

Peter Farrell – Development Officer.

Most players play most of their tennis from the baseline. But there are at least **two good reasons** why you can be more effective from the net position, so don't be backward about coming forward!



ONE GOOD REASON: In the diagram above, its clear that Player A can hit the ball farther away from Player B when B is at the baseline, compared to when B is at the net.



ANOTHER GOOD REASON: In the diagram above, its clear that Player B can hit the ball farther away from Player A when B is at the net, compared to when B is at the baseline (*you can hit sharper angles when at the net*).